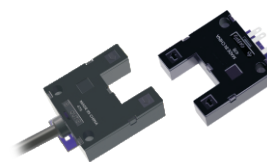
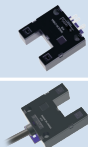


# Wide Slot Photosensor : 13mm Slot ■ EE-SPX303/403

- Noise resistant.
- Reverse connection protection.
- Connector-ready and pre-wired types are selectable.



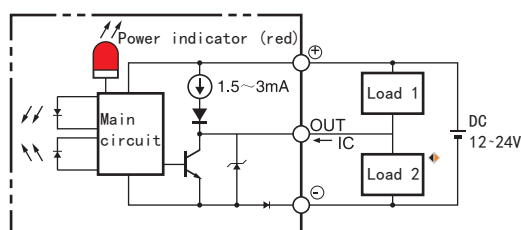
Category					
Appearance	Sensing method	Slot width/depth	Output	Operation mode	Model
	Through beam with slot	13mm * 10mm (W * D)	NPN	Dark-ON	EE-SPX303
				Light-ON	EE-SPX403
				Dark-ON	EE-SPX303-1
				Light-ON	EE-SPX403-1

 Infrared light

## Ratings and Specifications

Sensing method	Through-beam with slot				
Sensing distance	13mm (slot width)				
Standard sensing object	Opaque object: 2.2x0.5mm min.				
Differential distance	0.05mm max.				
Light source	Infrared LED (940nm)				
Supply voltage	5-24V DC $\pm 10\%$ , ripple(P-P) $\pm 10\%$ max.				
Control output	NPN open collector: 5-24V DC, 80mA max. 80 mA load current with a residual voltage of 2V max. 10 mA load current with a residual voltage of 1V max. OFF current (leakage current): 0.5 mA max.				
Response frequency	100 HZ min.				
Ambient illumination	3,000 lx max. with fluorescent light on the surface of the receiver				
Ambient temperature	Operating: -25 to 55°C, Storage: -30 to 80°C (with no icing or condensation)				
Ambient humidity	Operating: 5%-85%RH, Storage: 5%-95%RH (with no icing or condensation).				
Vibration resistance	Destruction: 10-55HZ, 1.5mm double amplitude for 2h each in X, Y and Z directions				
Shock resistance	Destruction: acceleration of 500 m/s <sup>2</sup> , 3 times each in X, Y and Z directions.				
Protection degree	IEC60529 IP50				
Connection method	①Pre-wired type (1m, standard length) ②Connector type: can't be soldered directly. Connector accessory (EE-1001) is sold separately.				
Material	Case	Polycarbonate			

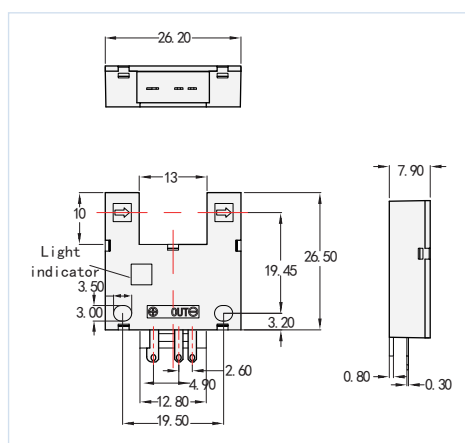
## I/O Circuit Diagrams



## Dimensions

Unit: mm

EE-SPX303  
EE-SPX403



EE-SPX303-1  
EE-SPX403-1

