



■ Features

- Molding Inductor.
- Low Profile,Low Temp.
- Large Current(Over 15A).
- Customize For Different Need.
- Operating temperature:-40°C ~ +125°C.

■ Applications

- General Electronic.
- Video Device,TV,TFT.
- Power Module for PC.
- NB/Lap Top Computer.
- Server,VGA Card/Module.

■ Product Identification

$\frac{\text{KOP}}{(1)} \quad \frac{\square\square\square\square\square}{(2)} - \frac{\square\square\square}{(3)} \quad \frac{\square}{(4)}$

(1) : Type

(2) : Dimensions

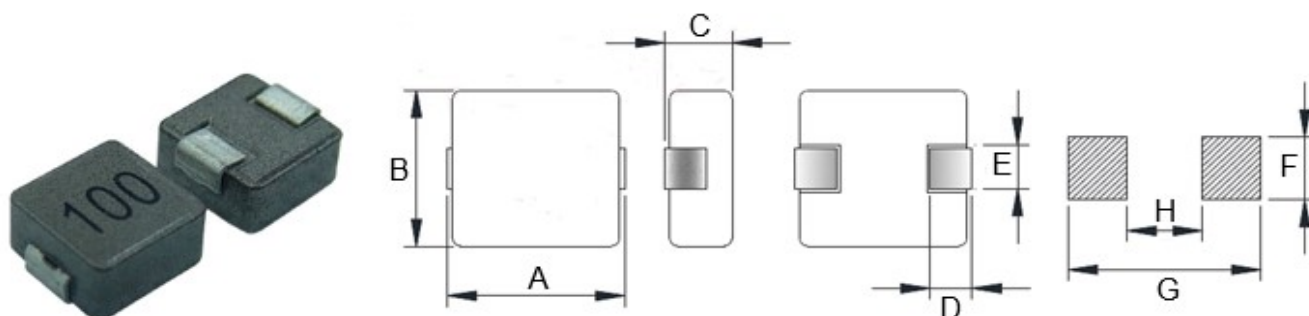
(3) : Inductance value

(4) : Inductance Tolerance: N=±30%,M=±20%, K=±10%



SMD Power Inductors -KOP0850 Series

■ Shapes and Dimensions (Unit: mm)



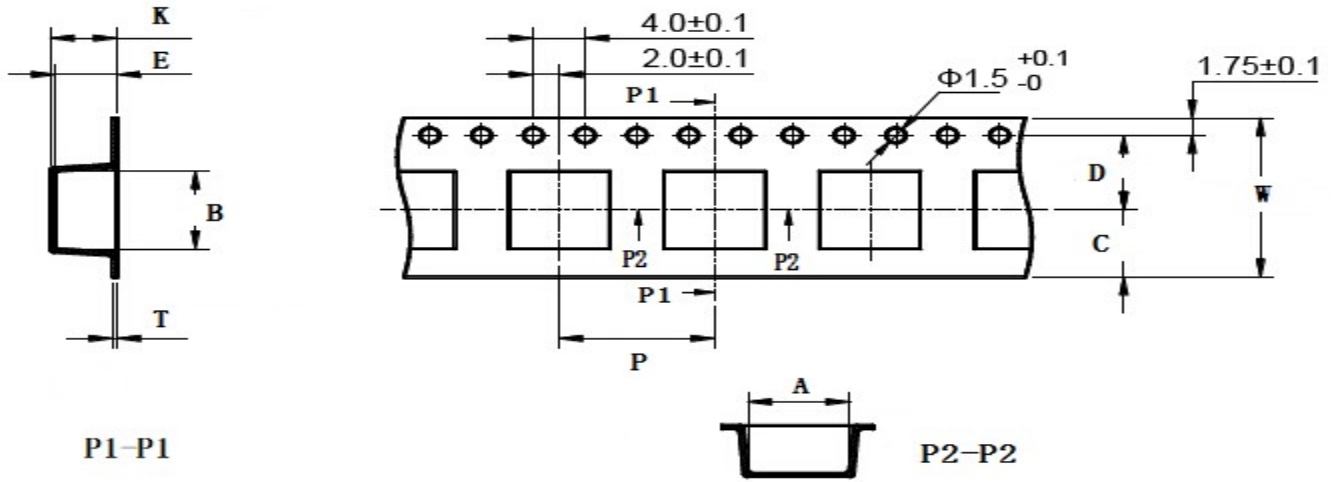
TYPE	A	B	C Max.	D	E Ref.	F Ref.	G Ref.	H Ref.
KOP0850	7.8±0.5	7.2±0.3	5.0	3.0±0.3	1.6±0.3	3.5	9.6	3.5

■ KOP0850 Series

Part Number	Inductance (uH) @100KHz	DC Resistance (mΩ)		Heat Rating Current (A)	Saturation Current (A)
		Typ.	Max.		
KOP0850-2R2□	2.2	10	12	10.0	15.0
KOP0850-3R3□	3.3	15	20	8.0	12.0
KOP0850-4R7□	4.7	18	23	7.0	10.5
KOP0850-6R8□	6.8	23	30	5.5	9.0
KOP0850-8R2□	8.2	36	48	6.0	9.0
KOP0850-100□	10	39	50	4.8	7.0
KOP0850-220□	22	108	140	3.0	4.0
KOP0850-270□	27	140	182	3.0	5.0
KOP0850-330□	33	160	200	2.0	4.0
KOP0850-470□	47	206	247	2.0	3.0
KOP0850-560□	56	240	310	2.0	3.0

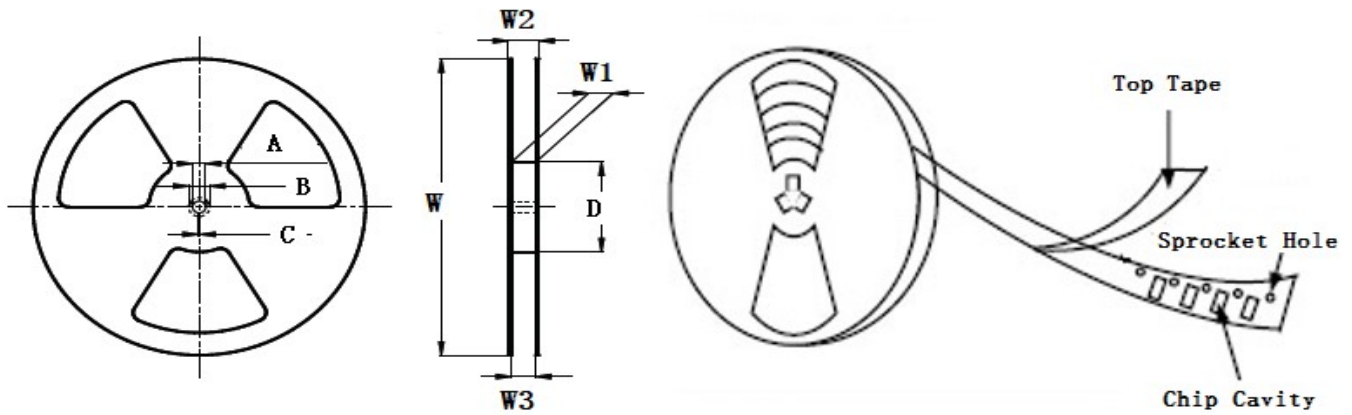
- ※ The saturation current value is the DC current value having inductance decrease down to 30%. (at 20°C)
- ※ The temperature rise current value is the DC current value having temperature increase up to 40°C. (at 20°C)
- ※ The rated current is the DC current value that satisfies both of current value saturation current value and temperature rise current value.

■ Taping Dimensions(Unit:mm)



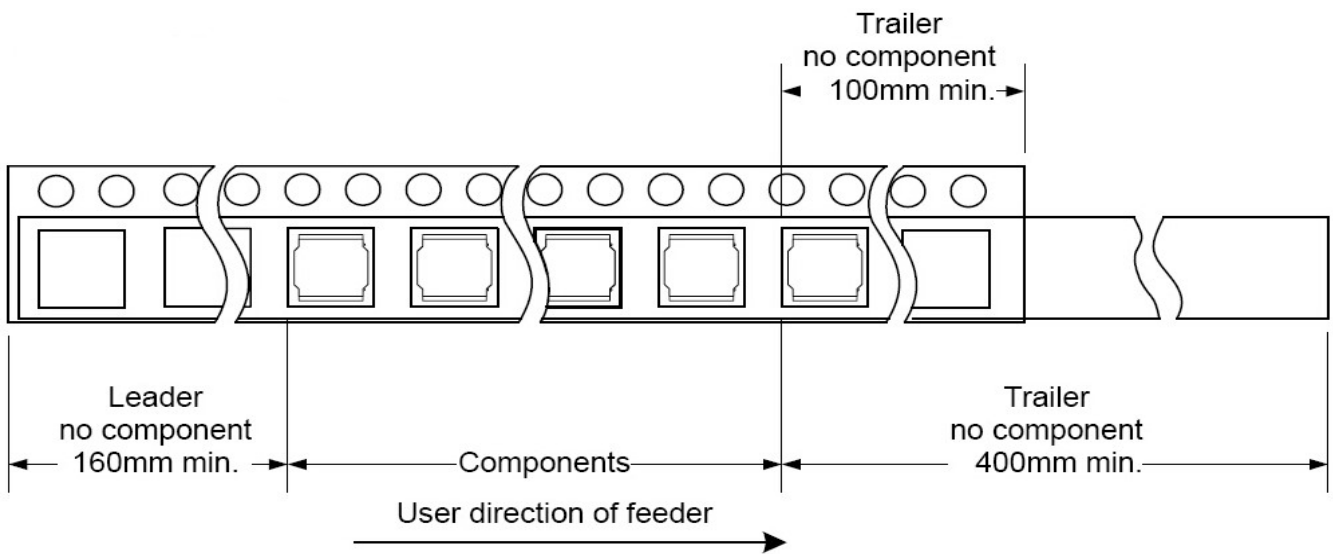
TYPE	W	A	B	C	D	E	P	K Ref	T	MPQ
KOP0850	16±0.3	7.7±0.1	8.20±0.1	6.75	7.5±0.1	5.5±0.1	12±0.1	5.1	0.40±0.05	500

■ Reel Dimensions(Unit:mm)



TYPE	W	W1	W2	W3	A	B	C	D
KOP0850	330±2.0	16.4±2.00	22.4MAX	15.9 Min	13.0±0.50	21.0±0.80	2.0±0.50	100 Min

■ Direction of rolling



■ Cover tape peel off condition



Cover tape peel force shall be 0.1N to 1.3N.

Reference peel speed 300 ± 10 mm/min.